

The TÜV NORD logo is a blue square with the text 'TÜV NORD' in white, bold, sans-serif font.

TÜV NORD

Passion For Safety

TÜV HELLAS (TÜV NORD)

**Inspection
Certification
Training**

3/2024

TÜV®

TÜVNORD

Passion for Safety

TÜV NORD GROUP

TÜV NORD GROUP at a glance

TÜV®

TÜV NORD GROUP

At a glance

Foundation of the associations:

- TÜV Nord e.V.: 1869
- RWTÜV e.V.: 1872
- TÜV Hannover/Sachsen-Anhalt e.V.: 1873

Foundation of TÜV NORD

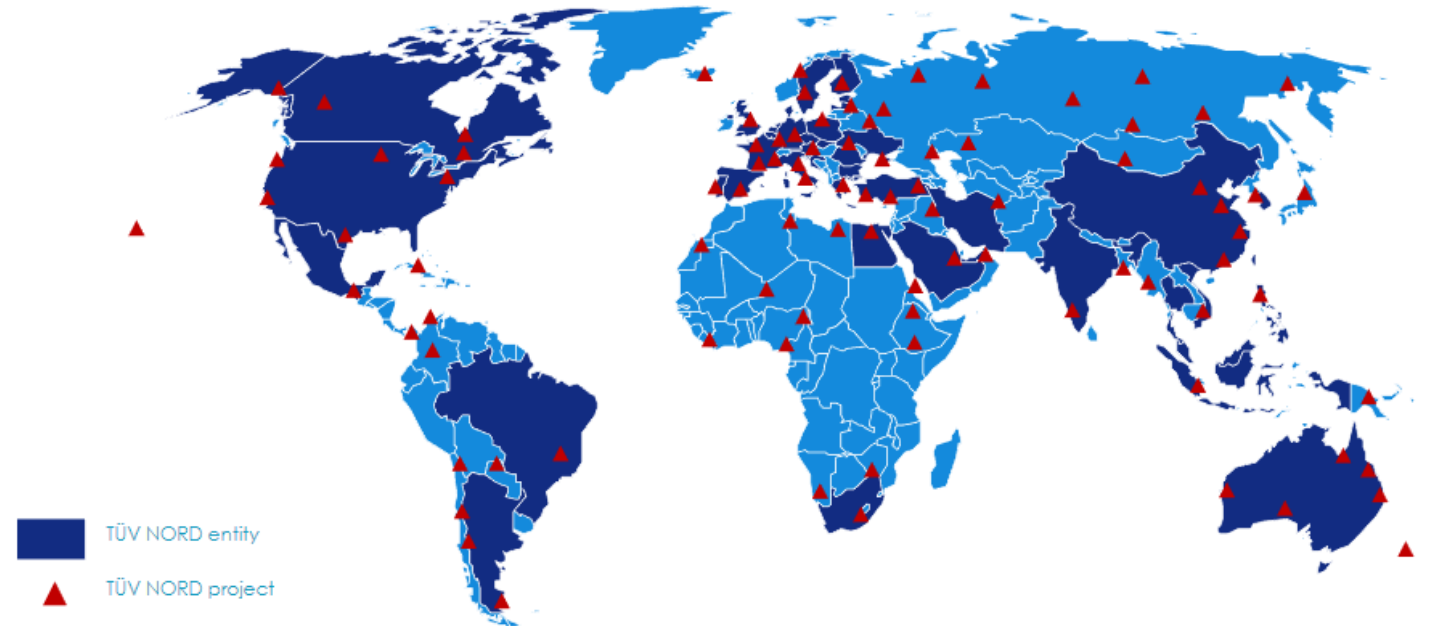
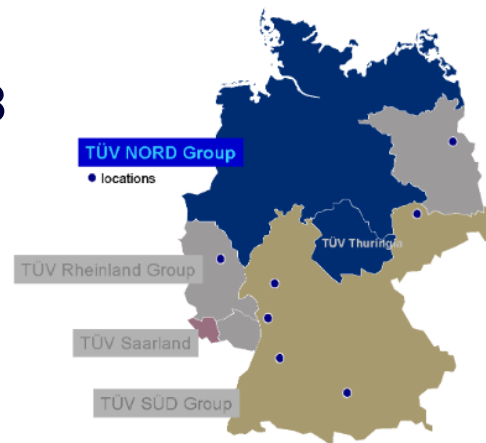
- 2004

Number of Employees

- More than 15000

Turnover in 2023

- 1,7 Bi€



TÜV NORD GROUP

At a glance



100

Operation in 100 countries



15.000

Number of Employees Worldwide

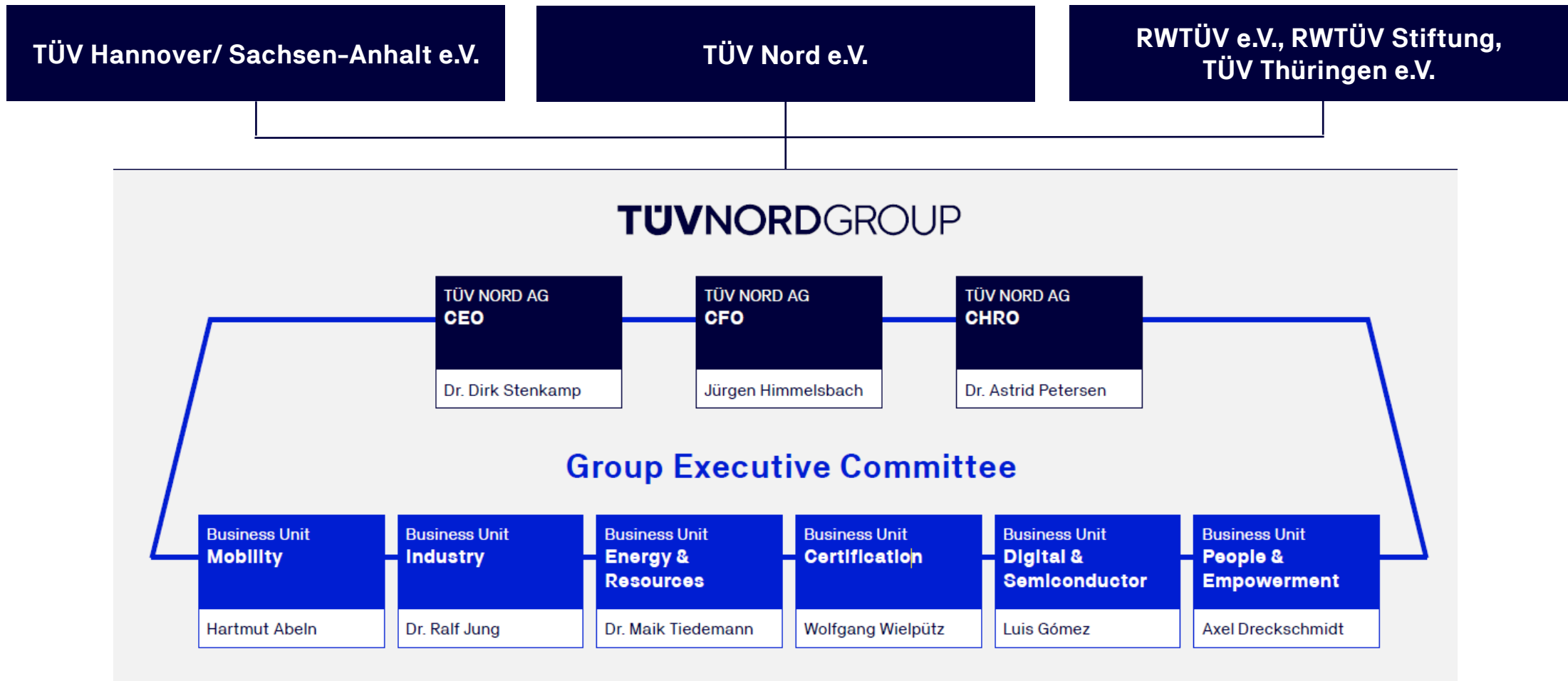


1,7 Bi€

Turnover 2023

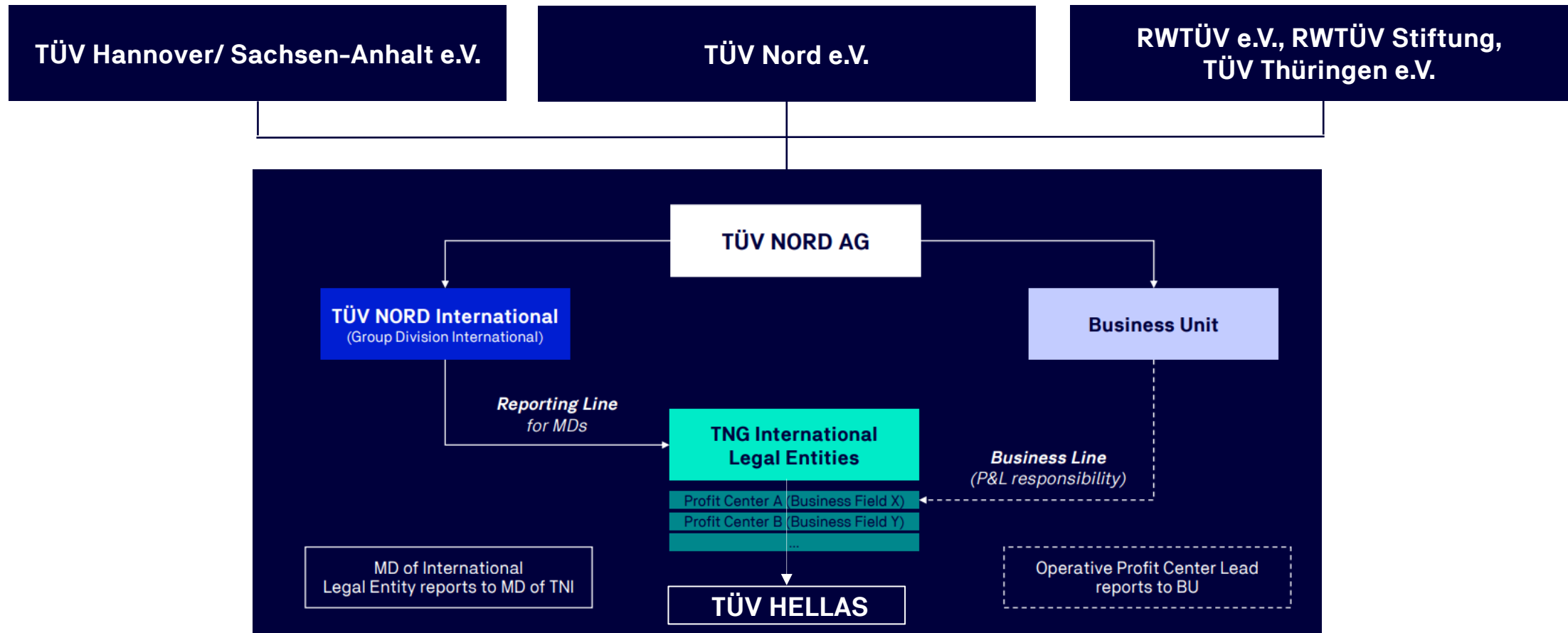
TÜV NORD GROUP

About TÜV NORD GROUP



TÜV NORD GROUP

About TÜV NORD GROUP



TÜV HELLAS (TÜV NORD)

The leader organization in
Inspection, Certification & Training

TÜV HELLAS (TÜV NORD)

At a glance

Establishment:

- TÜV HELLAS: **1987**
- **100%** subsidiary of TÜV NORD GROUP
- Offices: **Athens – Thessaloniki – Crete**



Operation in Cyprus and Egypt



186
Employees

250
External Service Providers

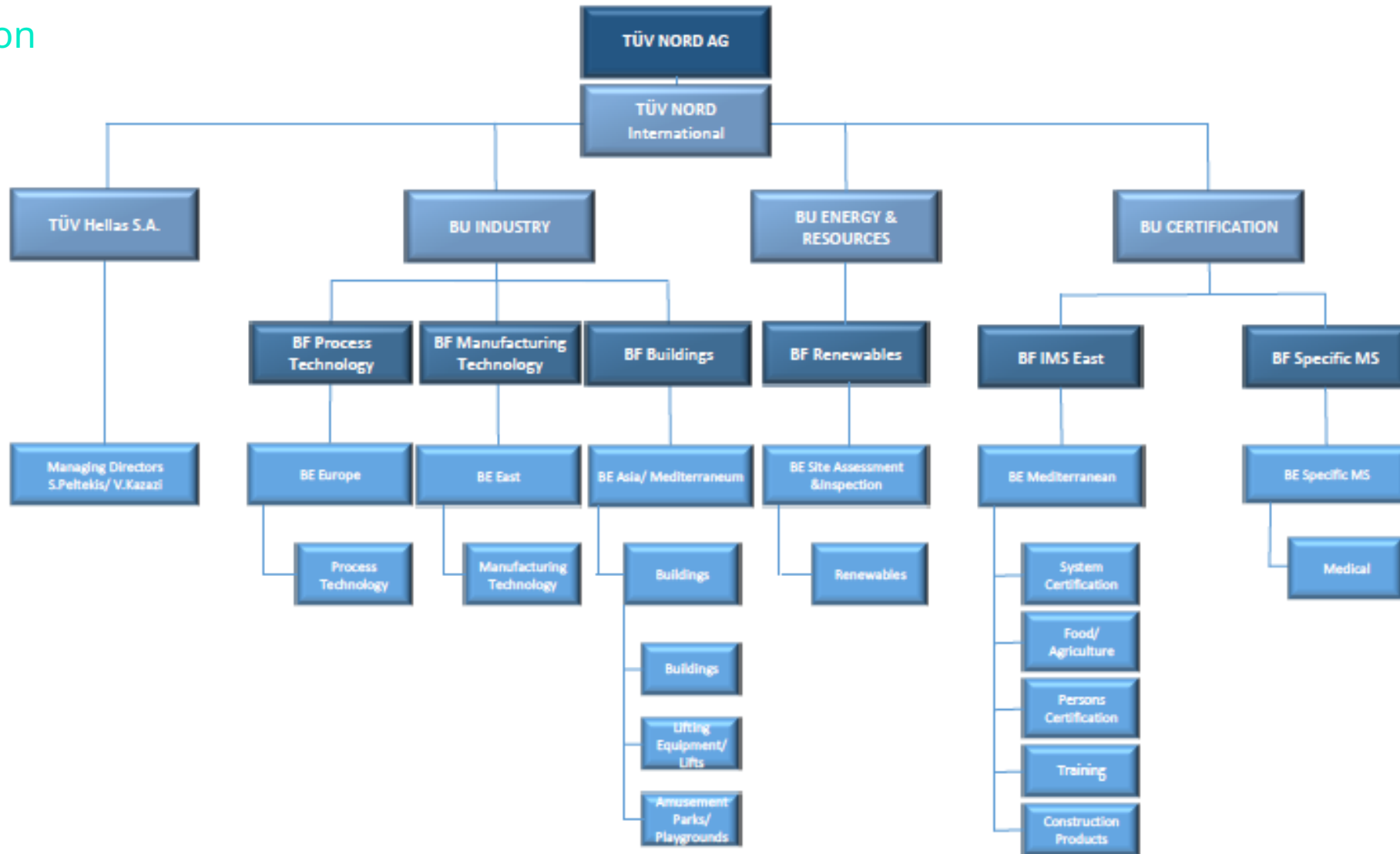


32 m€
Turnover (Greece, Cyprus, Egypt) 2023

25 m€
Turnover Greece 2023

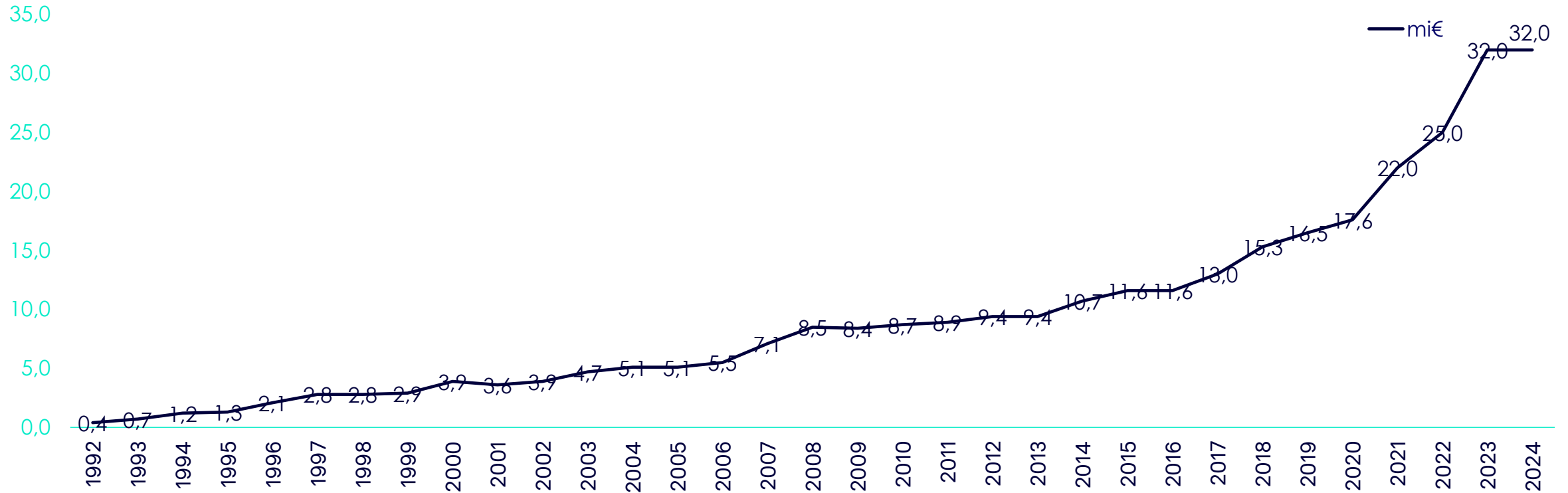
TÜV HELLAS (TÜV NORD)

Organization



TÜV HELLAS (TÜV NORD)

Our progress



Including Cyprus & Egypt

TÜVNORD

TÜV HELLAS

Passion for Safety

Our Services

By your side since 1987

TÜV®

Management Systems

for all kind of industry & services

Our Services

| Quality | Environment | Health & Safety at Work |
|---|--|---|
| <p>ISO 9001 (Quality Management System)</p> | <p>ISO 14001 (Environmental Management System)</p> | <p>ISO 45001 (Health & Safety Management System)</p> |
| <p>ISO 37301 (Compliance Management System)</p> | | |
| <p>ISO 37001 (Anti- bribery Management System)</p> | <p>ISO 50001 (Energy Management System)</p> | <p>ISO 39001 (Road Safety Management System)</p> |
| <p>ISO 37002 (Whistleblowing management system-Guidelines)</p> | | |
| <p>ISO 17100 (Translation Services Management System)</p> | <p>EMAS III (Community Ecological Management and Control System)</p> | <p>GWO Global Wind Organization approved Certification Body for Training Providers</p> |
| <p>ISO 21001 (Educational organizations: Management systems for educational organizations)</p> | | |
| <p>ISO 29993 (Learning Services Outside Formal Education Service Requirements)</p> | <p>EU ETS emissions verification</p> | |
| <p>ELOT 1433 (Quality Management System of Educational Services of Elementary & Language Schools)</p> | <p>ISO 14064-1 Greenhouse gases Part 1: Specification with guidance at the organization level for quantification and reporting of greenhouse gas emissions and removals</p> | |
| <p>ISO 55001 (Asset management-Management system)</p> | <p>ISO 14064-2 Greenhouse gases Part 2: Specification with guidance at the project level for quantification, monitoring and reporting of greenhouse gas emission reductions or removal enhancements</p> | |
| <p>ISO 41001 (Facility Management)</p> | | |
| <p>ELOT 1429 (Managerial Competence Systems for the implementation of public works)</p> | | |
| <p>ISO 19650-2 (Organization and digitization of information about buildings and civil engineering works, including building information modelling (BIM) Part 2: Delivery phase of the assets)</p> | <p>ISO 14067 Greenhouse gases Carbon footprint of products</p> | |
| <p>ISO 37008 Investigation Methods</p> | | |
| <p>ISO 18295 Customer Service Centers</p> | <p>ISO 46001 (Water Efficiency Management System)</p> | |

Management Systems for all kind of industry & services

Our Services

Social Responsibility & Sustainability

SA 8000
(Corporate Social Responsibility System)

BSCI
(Business Social Compliance Initiative)

SMETA
Sedex Members Ethical Trade Audit

SEDEX
(Supplier Ethical Data Exchange)

GRI STANDARDS
(Global Reporting Initiative)

AA1000
(AccountAbility Series)

FSC/ PEFC ® Chain of Custody
(Forest Products management)

Health & Consumer Products

ISO 13485
(Medical Devices Quality Management System)

GG 32B/2004
(Principles and guidelines for good practice in the distribution of medical devices)

ISO 22716
(Cosmetics Good Manufacturing Practices)

EN 15224
(Quality Management System- Healthcare Services)

IFS HPC
(Household and Personal Care Products)

Compliance Audits

2nd Party Audits



Management Systems for all kind of industry & services

Our Services

Information Security & Business Continuity

ISO 27001

(Information Security Management System)

ISO 27701

(Privacy Information Management System)

ISO / IEC 20000-1

(Information Technology Management System)

ISO 22301

(Business Continuity Management System)

GDPR Compliance Maturity Level Audit



Food & Agriculture Sector

Our Services

| Primary Sector | Management Systems & Protocols | Retail - Wholesale | |
|--------------------------------|---|--|------------------------------|
| GLOBAL G.A.P. | ISO 22000:2018 ISO 9001:2015 ISO 14001:2015 FSSC 22000 V6 ISO 45001:2018 IFS Food V8 BRC Food V9 BRC Packaging | IFS Broker BRC Agents and Brokers Private Protocols Traceability Programs GMO Control Compliance Audits Custom made Audits | |
| Fruit and Vegetables | | Training | |
| Plant Propagation Material | | | |
| Globalgap Propagation Material | | Storage - Distribution | Social Responsibility |
| Combinable Crops | | | |
| Compound Feed Manufacturing | | | |
| Aquaculture | IFS Logistics | SMETA – BSCI Sustainable Fishery: ASC CoC, MSC CoC | |
| Chain of Custody | | | |
| GRASP | | | |
| Agro 2 | | | |
| Organic Products | 2nd Party Audits | | |



Industry Inspection – Certification Our Services

Constructions - Installations

Welding
Steel Structures
Civil Engineering Works
Mechanical & Electrical Installations
Heating – Ventilation – Air Conditioning
Fire Protection

Products - Certification

PED 2014/68/EU
Shop Inspection
Raw Materials
Manufacturers - Pipes
Simple Pressure Vessels (SPV 2014/29/EU)
Steam Boilers
ADR
Railway Equipment
Lifting Equipment



Industry

Inspection – Certification

Our Services

| Equipment | Certification of Construction Products |
|-----------|--|
|-----------|--|

Lifts
Initial and periodical inspections
EN 81-1/2

Lifts and safety components
(2014/33/EU),
EN 81-20/21/22/28, EN 81-50/70,
EN13015

Escalators
EN 115

Regulation 305/2011



Industry

Inspection – Certification

Our Services

Energy – Chemical Industries

Refineries – Chemical Industries

Natural Gas – Fuels Pipelines

Power Plants

Performance and Acceptance Test in Production Units and Power Plants

Wind Farms

Photovoltaic Parks

Hydroelectric Power Stations

Safe Operation of Production Units

Inspection of Equipment or Installation according to ATEX

Measurements of Energy & Environmental Parameters

Verification of Greenhouse Gases

Energy Verification

Inspection in **Tourism Industry**

Our Services

Inspections – Mandatory by Legislation

Star classification of Hotels

Water parks & Slides

Lifts

Lifting Equipment

Steam Boilers

Pressure Vessels

Energy Verification in SME



Inspection in **Tourism Industry**

Our Services

Safe Operation of Facilities and Equipment

Playgrounds Amusement Parks & Devices – Water Parks & Slides – Swimming Pools – Sports & Recreational Facilities – Playground Equipment

Fire Protection

MV Substations

Electrical Installations

Mechanical Equipment

Added Value Services

Certification of Management Systems

Mystery Client

Greek Breakfast Certification

Certification Mark “Boutique Hotel”

AegeanCuisine





Renewable Sector

Our Services

Renewables

Performance of yield assessments and expected energy calculations

Delivery of Lender's Technical Advisory (LTA) services (Lender's Engineer)

Review and approval of project's studies

Witnessing of Factory Acceptance Tests (FAT) all over the world

Owner's Engineer services – Construction monitoring

Inspection of critical works – certification of works' compliance with standards

Performance of acceptance tests and performance ratio

Assessment of projects in operation for refinancing purposes

Training

Our Services

| Training Courses | Topics |
|---|--------------------------------|
| Open-scheduled Training Courses | Quality |
| Customized Training Courses | Environment - Energy |
| More than 6.000 Training Courses | Health & Safety At Work |
| 65.000 Delegates – Executives | Information Security GDPR/ DPO |
| | Food Safety |
| | Agriculture |
| | Health & Medical Devices |
| | Tourism & Hotels |
| | Technical Skills |
| | Projects & Constructions |
| | Business Continuity |





Persons Certification according to ISO/IEC 17024

[Our Services](#)

Leading Position with more than:

80.000 Candidates

180 Certification Schemes

Persons Certification

according to ISO/IEC 17024

Our Services

Schemes:

Metal Working
Construction Works
Environmental Protection Works
Office administration- organization
Trading-sales
Industrial production & maintenance
Supply chain
Tourism & F&B industry services
Food & Agriculture
Energy
Health & Safety
Economic Sciences
Consulting
Publishing
Private education
Car, Machinery & Motorcycle Repair
Information and Communications Technologies
Data Security
Shipping



Our Services for the Environment, the Society and the Governance (ESG)*

(*excluding the mandatory certifications based on European Regulations)

I. Compliance Control

ENVIRONMENT

Inspection – Certification – Verification

- ISO 14001 Environmental Management System
- ISO 14064-1 / 14064-2 / 14067 Greenhouse gases
- ISO 20121 Sustainable Event Management
- ISO 20141 Sustainability in Tourism
- ISO 37101 Sustainable Community Development / ISO 37109 Sustainable Cities and Communities
- ISO 46001 Water Efficiency Management System
- ISO 50001 Energy Management System
- Forest Products Management - Chain of Custody (FSC® & PEFC™)
- Sustainable Fishing and Aquaculture - Chain of Custody - (MSC CoC / ASC CoC)
- CO2 Verification – EU ETS
- EU Eco-Management and Audit Scheme - EMAS
- Zero waste to Landfill
- ISO 37008 Investigation Methods
- ISO 18295 Customer Service Centers
- National Climate Law

SOCIETY

Inspection – Certification – Verification

- ISO 21001 Management systems for educational organizations
- ISO 22000 Food Safety System
- ISO 45001 Health & Safety Management System
- ISO 29993 Learning Services Outside Formal Education Service Requirements
- BSCI (Business Social Compliance Initiative)
- SEDEX (Supplier Ethical Data Exchange)
- GRASP (GLOBALG.A.P. Risk Assessment on Social Practice)
- ISO 30415 Diversity & Inclusion (D&I)
- Inspection according to the Global Wind Organization requirements for Training Providers

GOVERNANCE

Inspection – Certification – Verification

- ISO 9001 Quality Management System
- ISO 19650 Building Information Modeling (BIM)
- GDPR (Second Party Inspections)
- ISO/IEC 20000-1 Information Technology Management System
- ISO/IEC 27000 Information Security Management System
- ISO 27701 Privacy Information Management System
- ISO 37001 Anti- bribery Management System
- ISO 37002 Whistleblowing Management System
- ISO 37301 Compliance Management System

Verification of Sustainable Development Reports based on GRI Standards & AA1000 series standards

Οι υπηρεσίες μας για το Περιβάλλον, την Κοινωνία και την Εταιρική Διακυβέρνηση (ESG)*

(*εξαιρουμένου των υποχρεωτικών πιστοποιήσεων βάσει Ευρωπαϊκών Κανονισμών)

II. Εκπαίδευση

- Harassment and Bullying in the Workplace
- ISO 14064-1 / 14064-2 / 14067 Greenhouse gases
- ISO 20141 Sustainability in Tourism
- ISO 27001:2022 Lead Auditor Information Security Management System
- ISO 27701 Privacy Information Management System
- ISO 30415 Diversity & Inclusion (D&I)
- ISO 37109 Sustainable Cities and Communities
- ISO 37101 Sustainable Community Development
- ISO 46001 Water Efficiency Management System
- National Climate Law – Analysis, Practical Issues and Challenges



Thank you!

TÜV HELLAS (TÜV NORD)

282, Mesogion Av., 155 62, Chologos, Greece

Tel: +30 215 215 7400, Fax: +30 210 6528025

info@tuvhellas.gr

www.tuvhellas.gr



Athens
Thessaloniki
Crete
Ioannina

TÜV®



TÜVNORD